



THE  
FORSYTH  
BUILDING

Fourth Floor Suite - Fitout option for 1 in 8 m<sup>2</sup> density

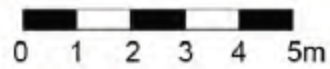
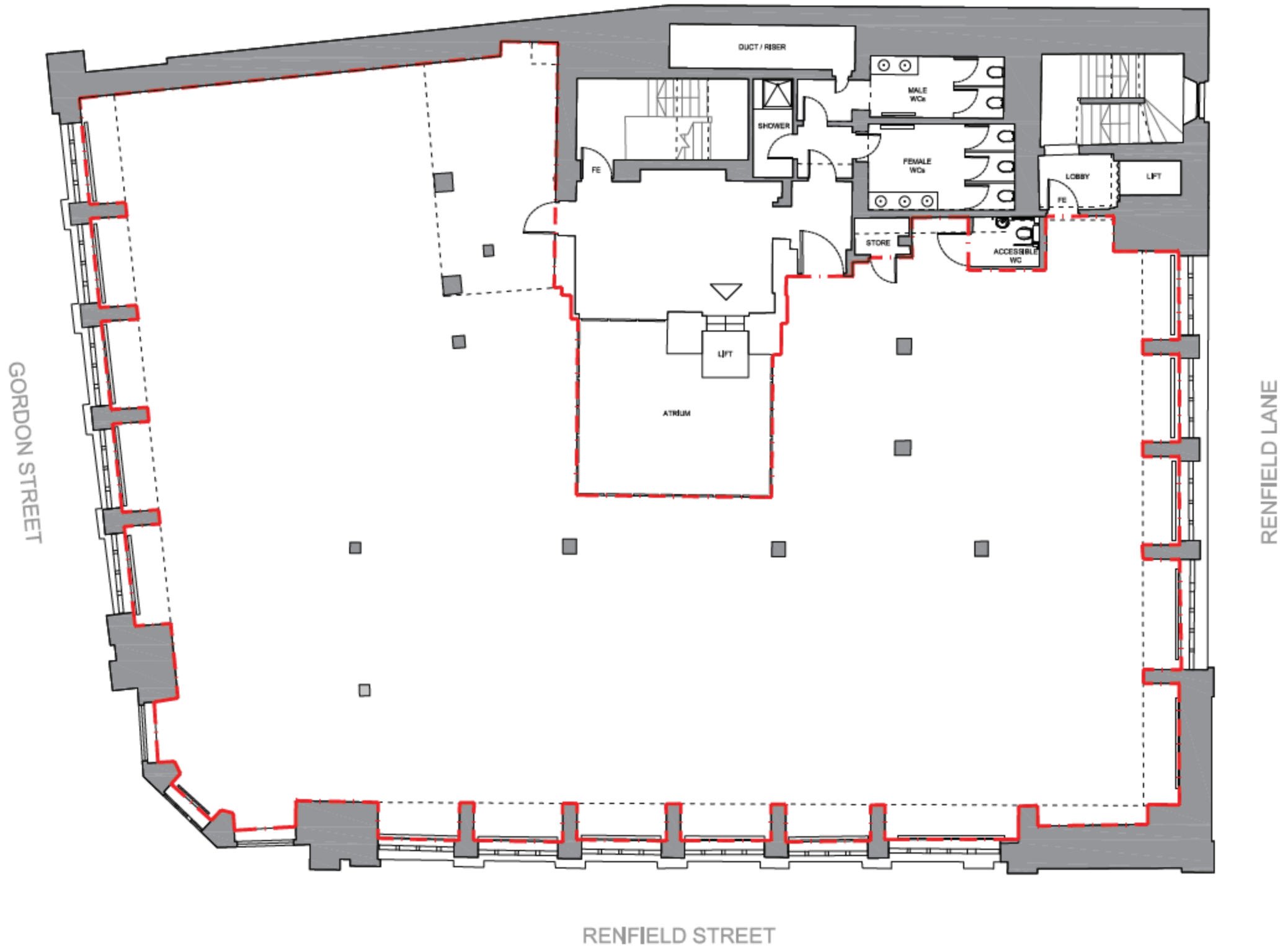
August 2017



# The Forsyth Building Fourth Floor Suite

Existing Floorplate

Office Area - 562 sqm / 6,058 sqft



--- Tenant / Suite Boundary

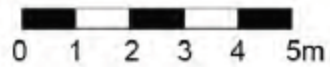
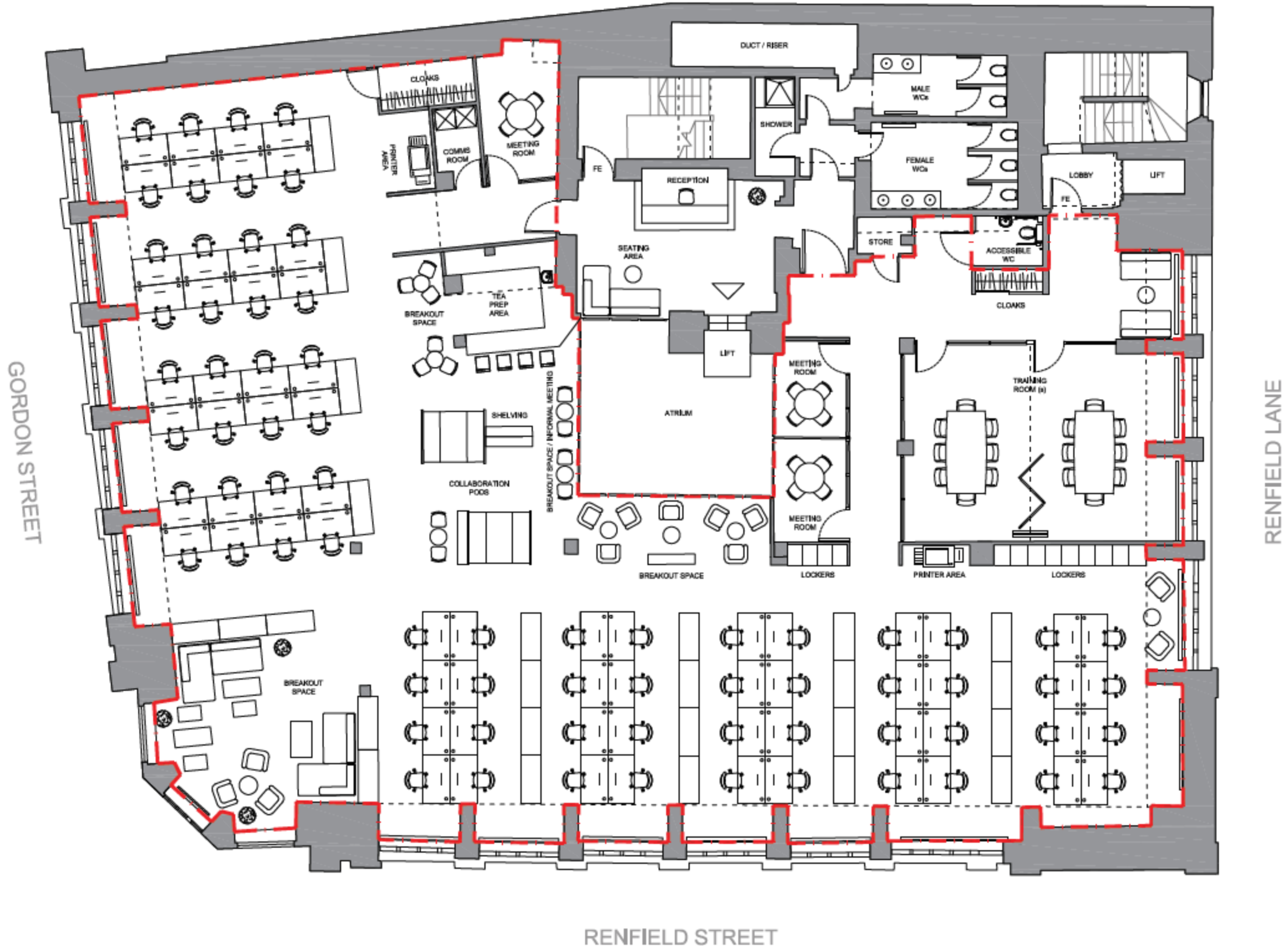
# The Forsyth Building Fourth Floor Suite

Proposed Office Space  
1 in 8 density fitout

Office Area - 562 sqm / 6,058 sqft

**Facilities illustrated:**

- 70 open plan desks, at size 1400x800mm
- Reception Area with adjoining Seating Area
- 3 x 4 Person Meeting Room
- Training Room with option to divide in 2
- Informal meeting / Breakout Areas
- Collaboration Pods
- Breakout Area
- Tea Prep Area
- Comms/Server Room
- Printer areas
- Store Room
- Male WC
- Female WC
- Accessible WC
- Lockers
- Shower
- Cloaks



--- Tenant / Suite Boundary

# The Forsyth Building Fourth Floor Suite

Proposed Office Space  
1 in 8 density fitout

Office Area - 562 sqm / 6,058 sqft

Facilities illustrated:

- ① 70 open plan desks, at size 1400x800mm
- ② Reception Area with adjoining Seating Area
- ③ 3 x 4 Person Meeting Room
- ④ Training Room with option to divide in 2
- ⑤ Informal meeting / Breakout Areas
- ⑥ Collaboration Pods
- ⑦ Breakout Area
- ⑧ Tea Prep Area
- ⑨ Comms/Server Room
- ⑩ Printer areas
- ⑪ Store Room
- ⑫ Male WC
- ⑬ Female WC
- ⑭ Accessible WC
- ⑮ Lockers
- ⑯ Shower
- ⑰ Cloaks



## The Forsyth Building Fourth Floor Suite

Proposed Office Space  
1 in 8 density fitout

Office Area - 562 sqm / 6,058 sqft

### Facilities illustrated:

- 70 open plan desks, at size 1400x800mm
- Reception Area with adjoining Seating Area
- 3 x 4 Person Meeting Room
- Training Room with option to divide in 2
- Informal meeting / Breakout Areas
- Collaboration Pods
- Breakout Area
- Tea Prep Area
- Comms/Server Room
- Printer areas
- Store Room
- Male WC
- Female WC
- Accessible WC
- Lockers
- Shower
- Cloaks



## The Forsyth Building Fourth Floor Suite

Proposed Office Space  
1 in 8 density fitout

Office Area - 562 sqm / 6,058 sqft

### Facilities illustrated:

- 70 open plan desks, at size 1400x800mm
- Reception Area with adjoining Seating Area
- 3 x 4 Person Meeting Room
- Training Room with option to divide in 2
- Informal meeting / Breakout Areas
- Collaboration Pods
- Breakout Area
- Tea Prep Area
- Comms/Server Room
- Printer areas
- Store Room
- Male WC
- Female WC
- Accessible WC
- Lockers
- Shower
- Cloaks

